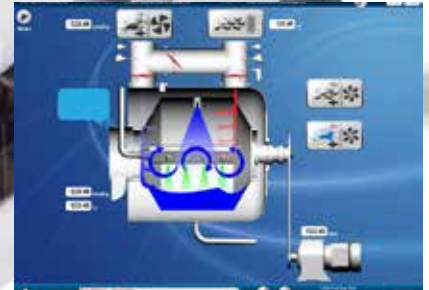
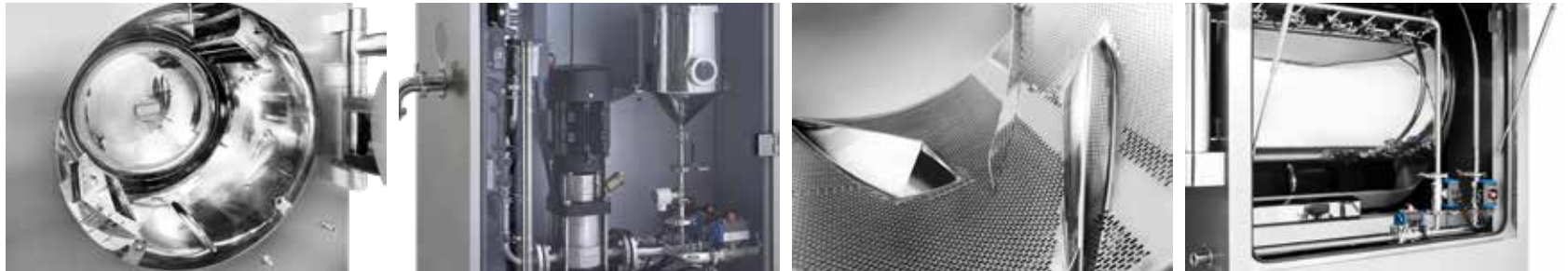


Auto
Coating
Series



Auto Coating Series



- Production capacity is based on the tablet porosity at 0.3 at density of 0.7 and the result may vary depending on tablet shape and pan speed.
- Coating volume is calculated based on the maximum production capacity. Use safety ratio for safe operation.
- Specifications and dimensions are subject to change without prior notice.



Description		Specification			
Coating pan Diameter (Ø mm)		240	330	420	480
Coating Pan Opening Diameter (mm)		135	160	200	200
Coating Volume	(ℓ/batch)	1	2.5	5	9
	(kg/batch)	0.4~0.7	0.7 ~ 1.7	1.7~3.5	2 ~ 6.3
Coating Pan Speed (rpm)		3 ~ 50			
Pan Drive Motor (kW)		0.4			
Total Power Consumption (kW)		11.2			
Compressed Air Consumption (ℓ/min)		200			
Air Supply Heating Type		Electronic Heater (8.4kW)			
Filter		Supply : Pre, Medium, HEPA / Exhaust : cartridge			
Spray Gun Model		Schlick Gun 970			
Spray Gun Quantity		1			
Refining Temperature Sensor		Non-Contact type			
Exhaustair (Heat Exchanger) HEPA Filter (option)		●			
Exhaustair (Dust Collector) HEPA Filter (option)		●			
Air Supply	Air Volume (CMM)	14.5			
	Wind Pressure (mmAq)	60			
Exhaust Air	Air Volume (CMM)	11			
	Wind Pressure (mmAq)	120			
CIP system		Manual			
Solution Pump	Film	Watson-Marlow 323U Series			
	Sugar	Watson-Marlow 323U Series			
Dimension (mm)	Width (W)	630			
	Depth (D)	770			
	Height (H)	1,750			
Operating Type		HMI (21 CFR Part 11)			
Product Weight (Approx. kg)		450			
Power Supply		200, 220, 380, 400, 415, 440, 480V, 50/60Hz, 3Ph			